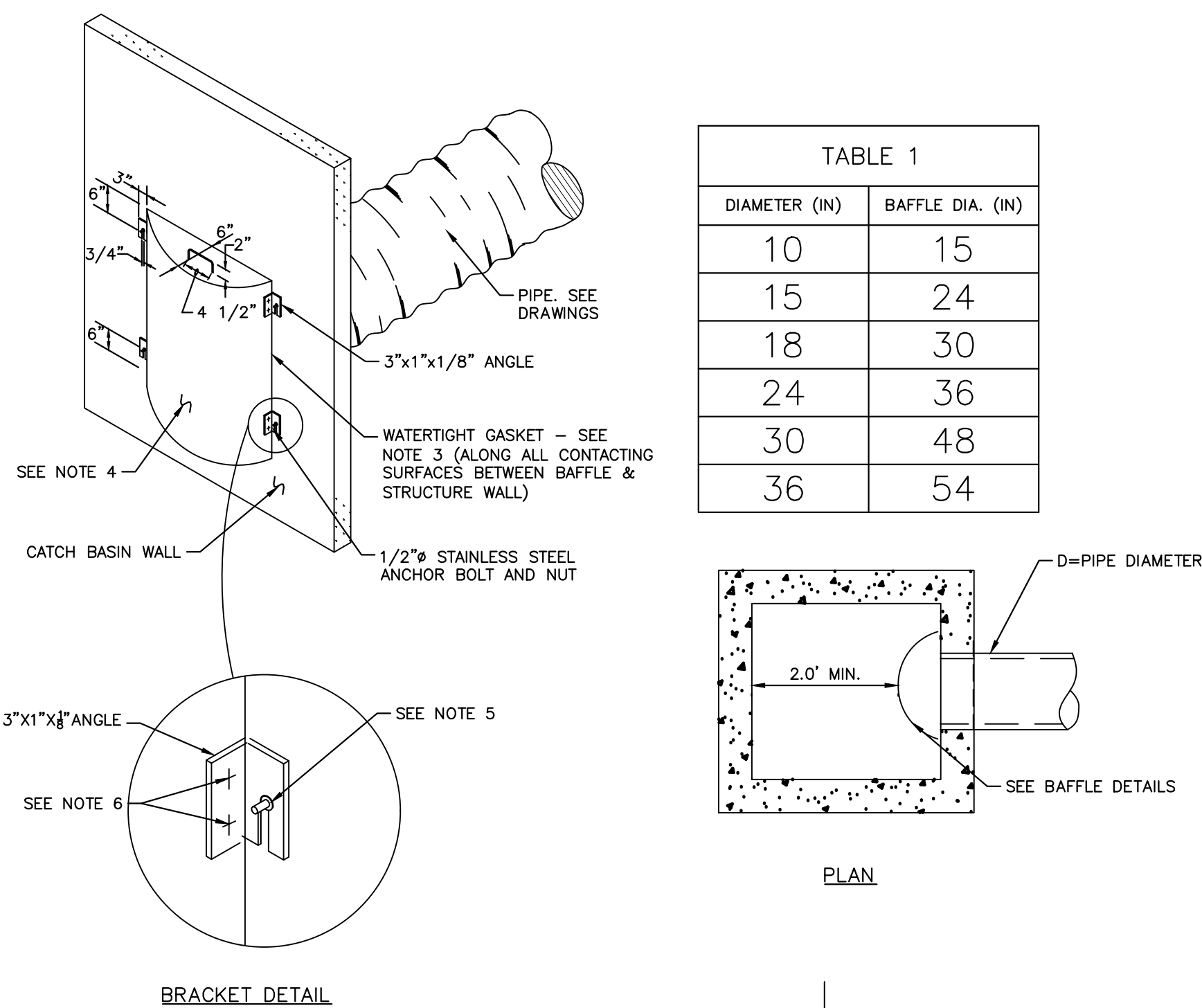
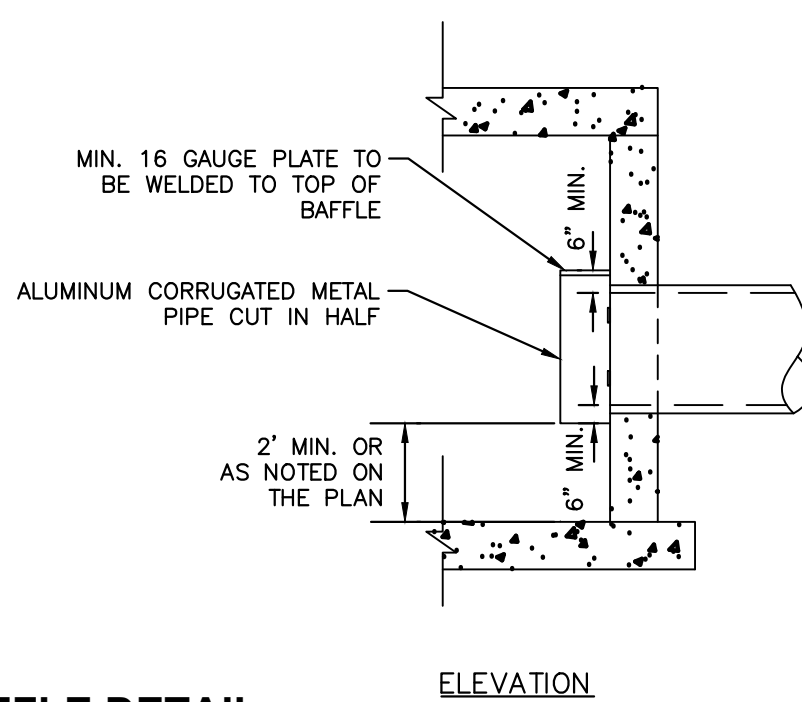


**1 EXFILTRATION TRENCH DETAIL**  
N.T.S.



- NOTES:**
1. CONTRACTOR TO VERIFY THAT BAFFLE WILL FIT STRUCTURE I.D.
  2. DEBRIS BAFFLE REQUIRED AT CATCH BASINS CONNECTED DIRECTLY TO PROPOSED DRAIN FIELD.
  3. PROVIDE NEOPRENE GASKET TO SIDES AND TOP.
  4. POLLUTION RETARDANT BAFFLE (PRB) SHALL BE A MINIMUM OF 2' FROM OPPOSITE WALL OF STRUCTURE, FROM OBSTRUCTION, OR ANOTHER PRB
  5. SECTION OF ALUMINUM CORRUGATED METAL PIPE IN HALF. BAFFLE DIAMETER TO BE AS PER TABLE
  6. 3/4" GALVANIZED LAG BOLT IN LEAD SHIELD.
  7. WELD OR 2-1/4" THRU BOLTS.

**2** BAFFLE DETAIL  
N.T.S.



**3 PRECAST DRAINAGE STRUCTURE**  
N.T.S.

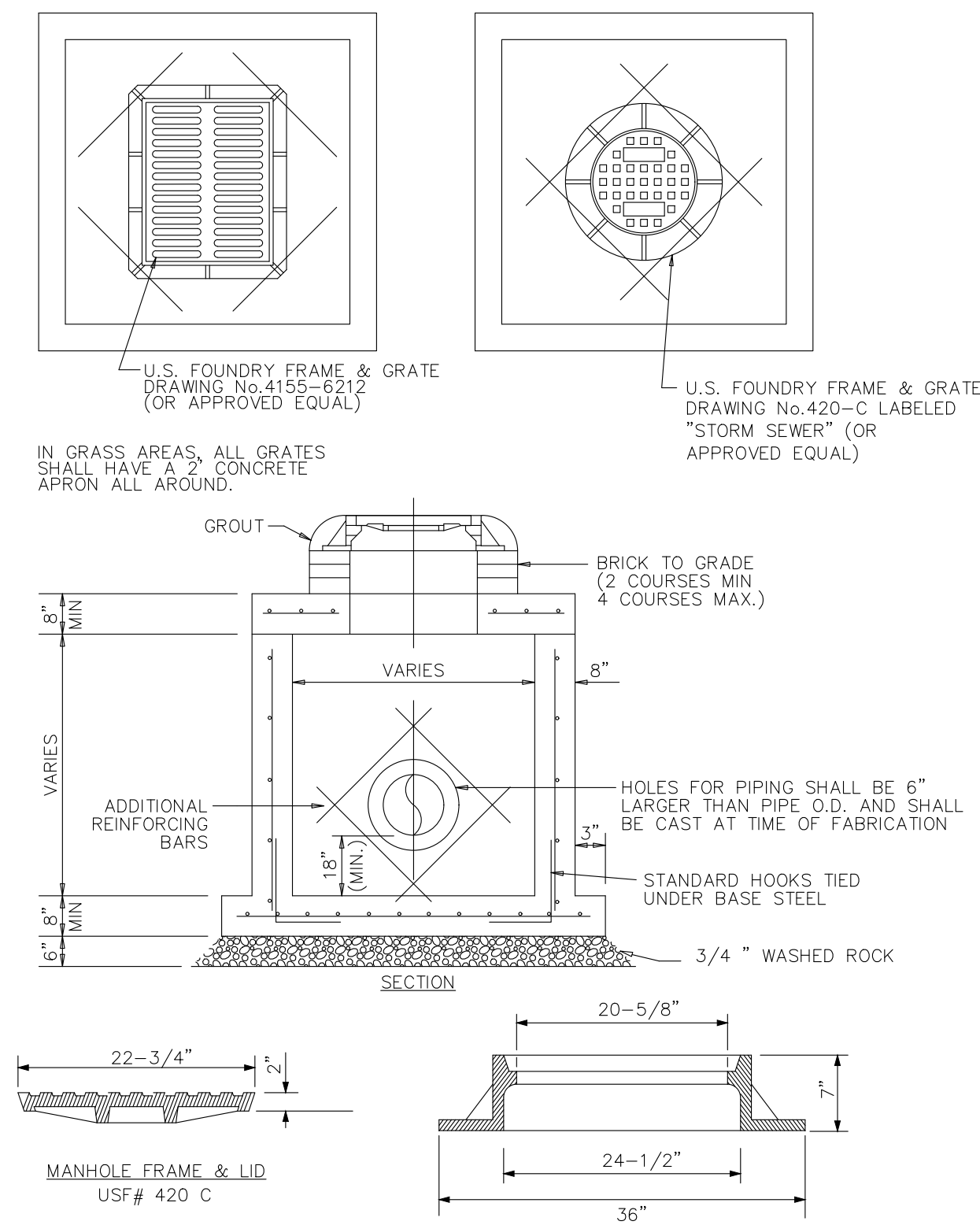
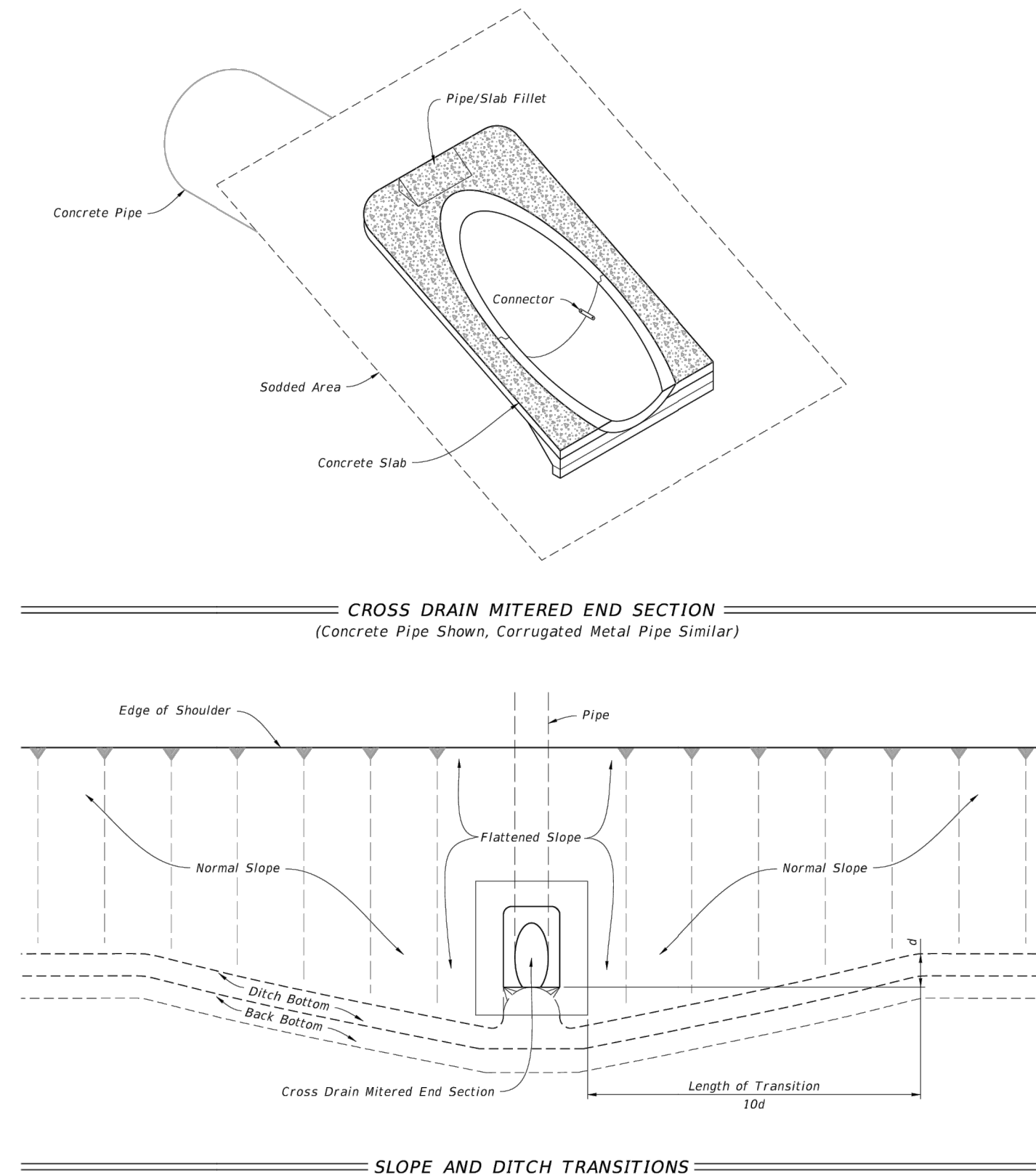
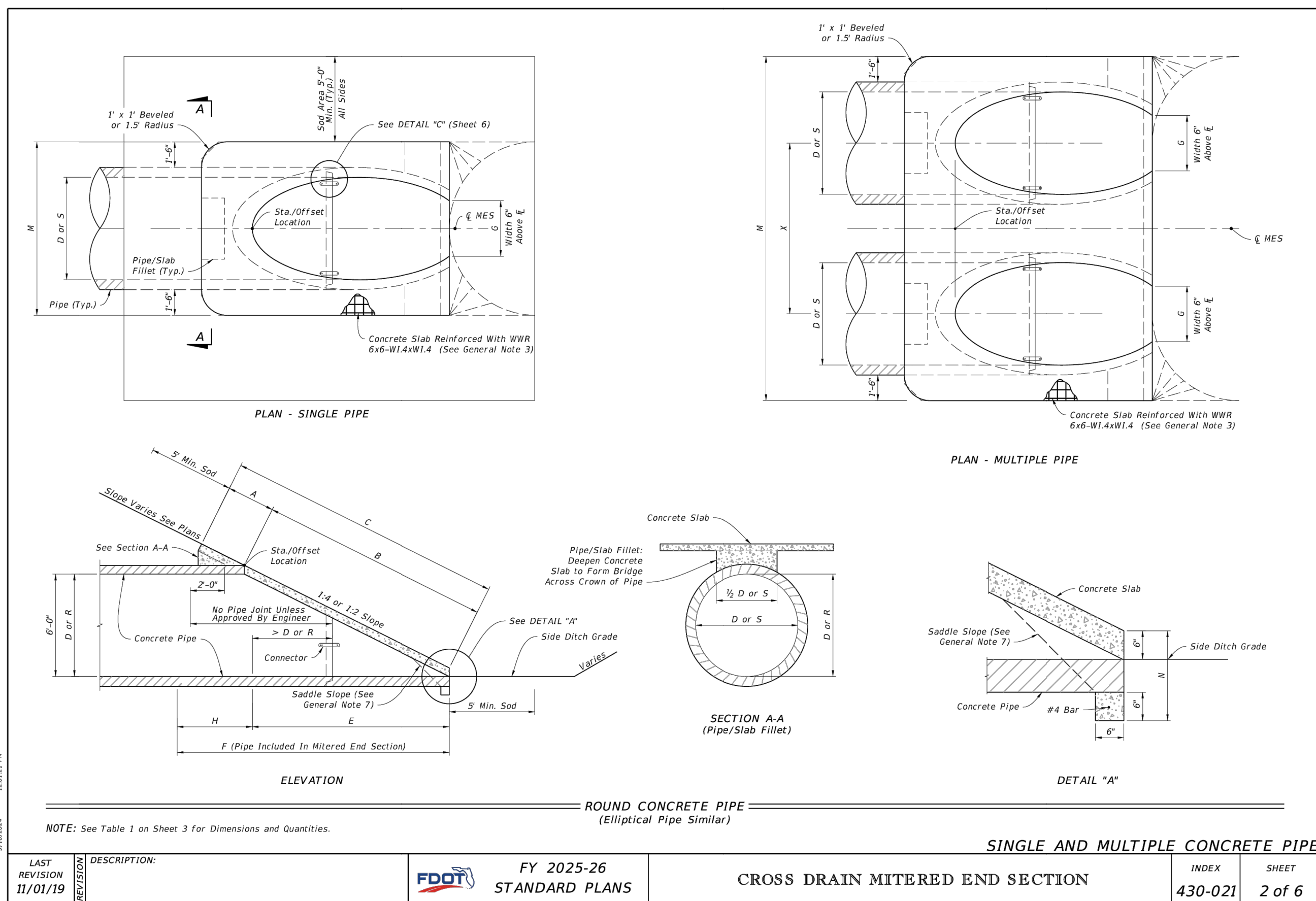


TABLE OF CONTENTS:	
Sheet	Description
1	General Notes and Contents
2	Single and Multiple Concrete Pipe
3	Concrete Pipe Dimensions and Quantities
4	Single and Multiple Corrugated Metal Pipe
5	Corrugated Metal Pipe Dimensions and Quantities
6	Concrete Pipe Connections and Corrugated Metal Pipe (CMP) Anchor Detail



**4 MITERED END SECTION DETAIL**  
N.T.S.



THIS ITEM HAS BEEN DIGITALLY SIGNED  
AND SEALED BY GEORGE BALABAN, P.E.  
ON THE DATE ADJACENT TO THE SEAL.

SIGNATURE MUST BE VERIFIED ON ANY  
ELECTRONIC COPIES.

THE PRESENCE OF GROUNDWATER SHOULD BE ANTICIPATED. CONTRACTOR'S BID SHALL INCLUDE CONSIDERATION FOR ADDRESSING THIS ISSUE AND OBTAINING ALL NECESSARY PERMITS

ALL ELEVATIONS SHOWN ON THESE PLANS ARE  
BASED ON THE NAVD 88. TO CONVERT THE  
ELEVATION HEREON TO NGVD 29 ADD 1.51



KNOW WHAT'S BELOW  
ALWAYS CALL 811  
BEFORE YOU DIG

It's fast. It's free. It's the law.

[www.callsunshine.com](http://www.callsunshine.com)